



New Partners for Smart Growth

Using CTOD Database: Jobs near Transit

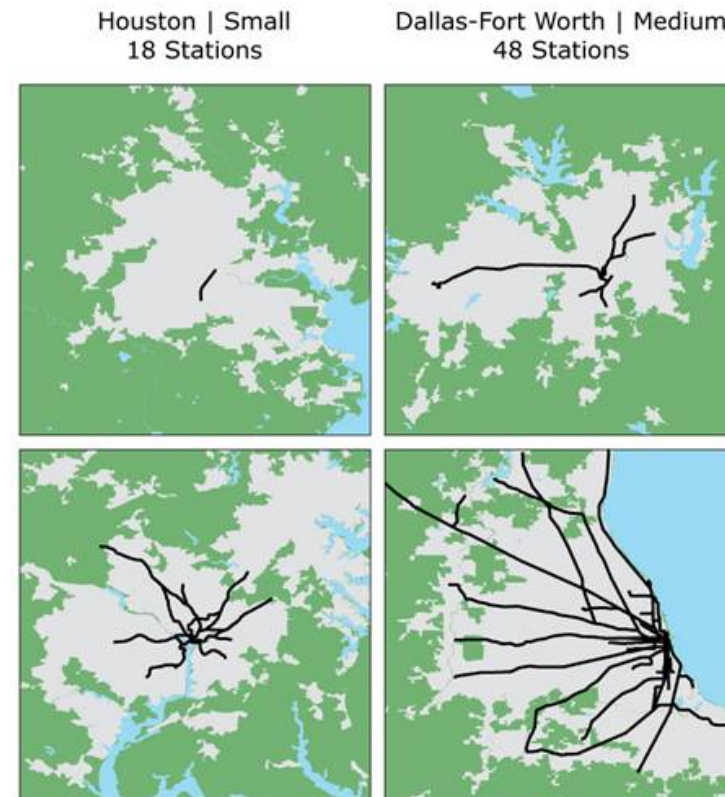
Sujata Srivastava

Principal, Strategic Economics

How many and what types of jobs are near transit today?

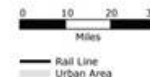
- **CTOD database:**
 - **34 transit regions**
 - **Sorted by system size**
- **LED employment data 2002-2008**

Four Transit Systems Shown at the Same Geographic Scale



Washington D.C. | Large
127 Stations

Chicago | Extensive
401 Stations



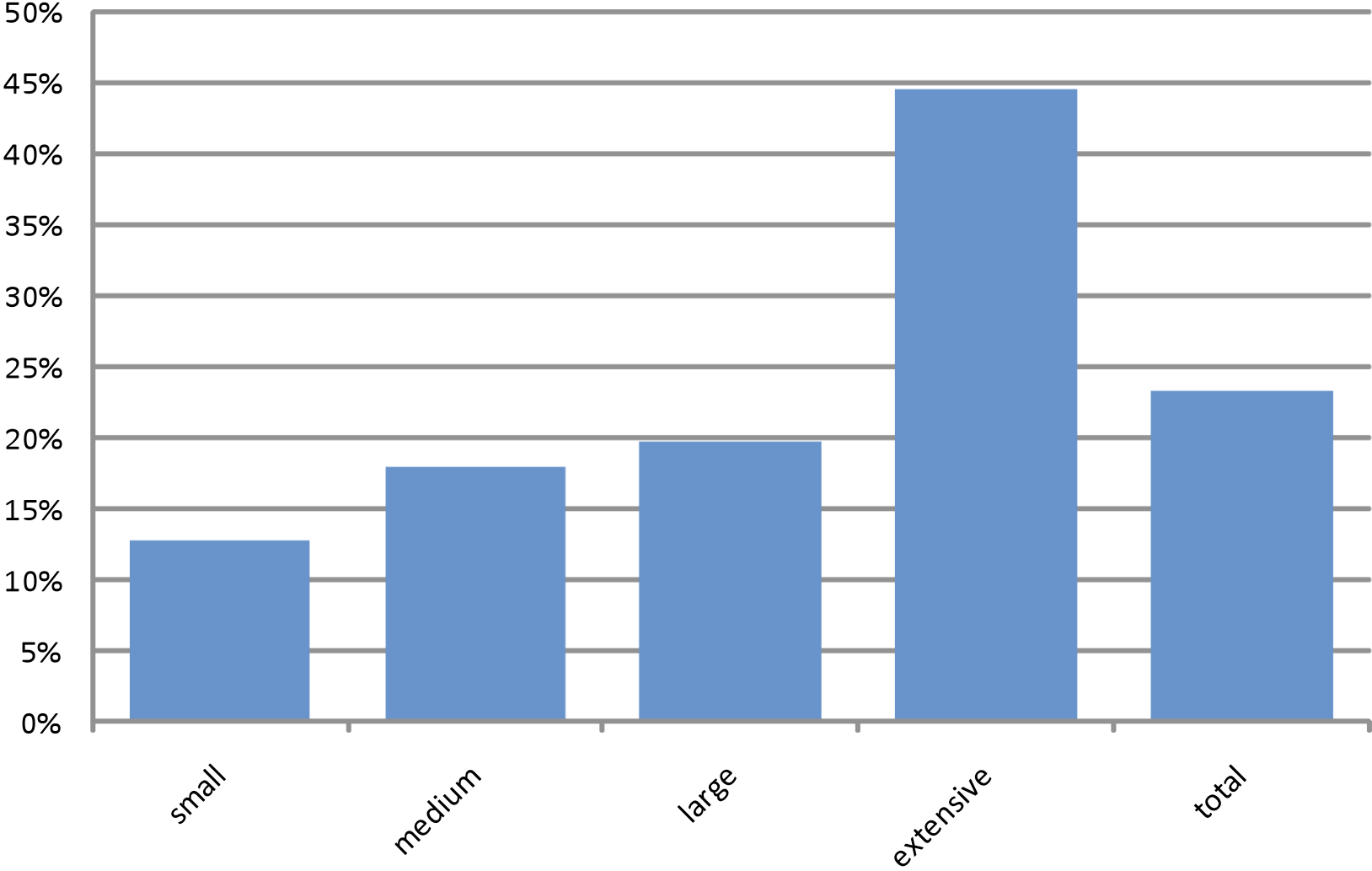
Key Findings



- 14 million jobs near transit in 2008
- 23 percent of jobs are near transit
- Share of jobs near transit declined 2002-2008

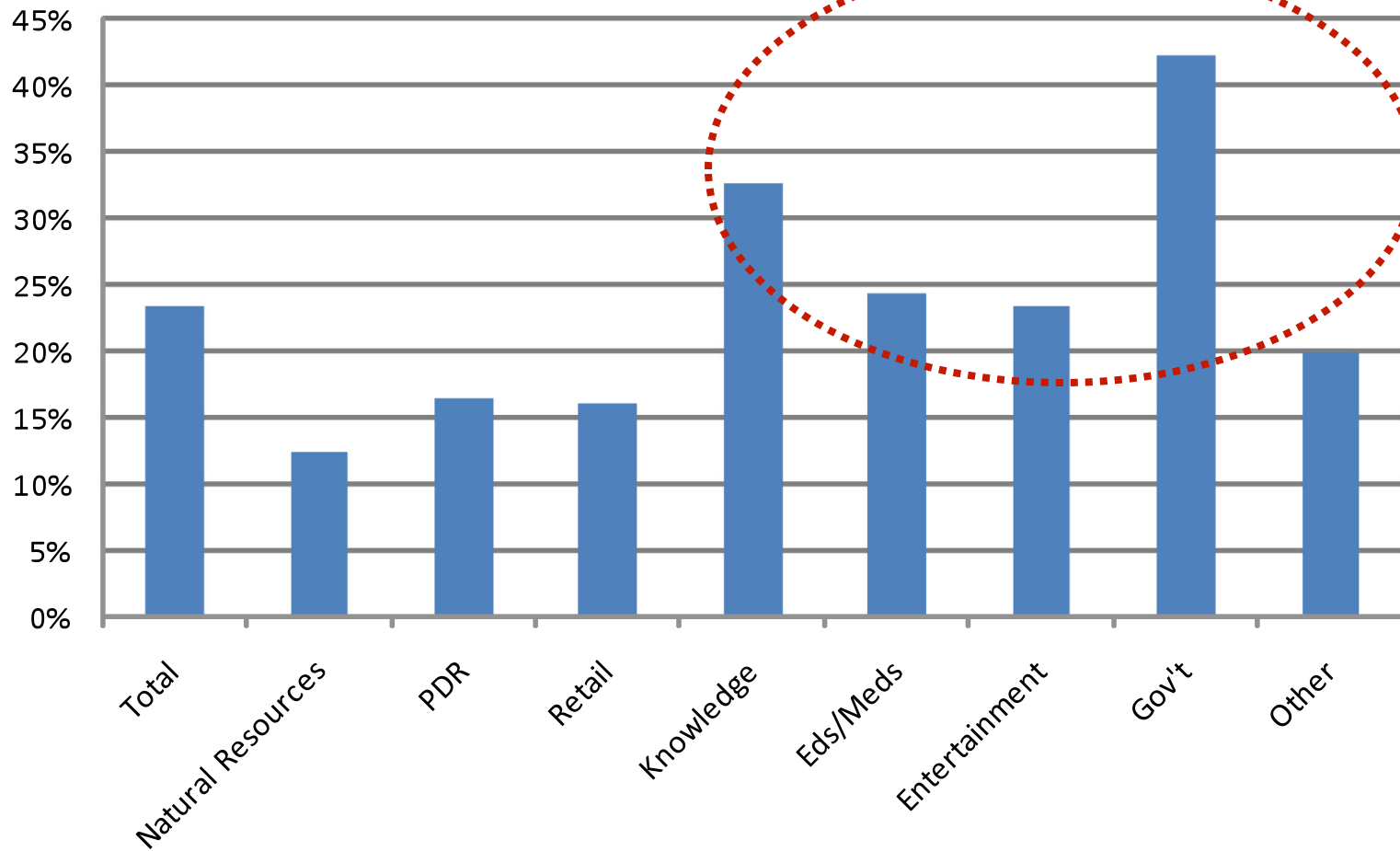
Share of jobs captured near transit depends on the system's size....

Transit Zone Capture Rate by System Size, 2008



....And some sectors are more likely to be near transit than others

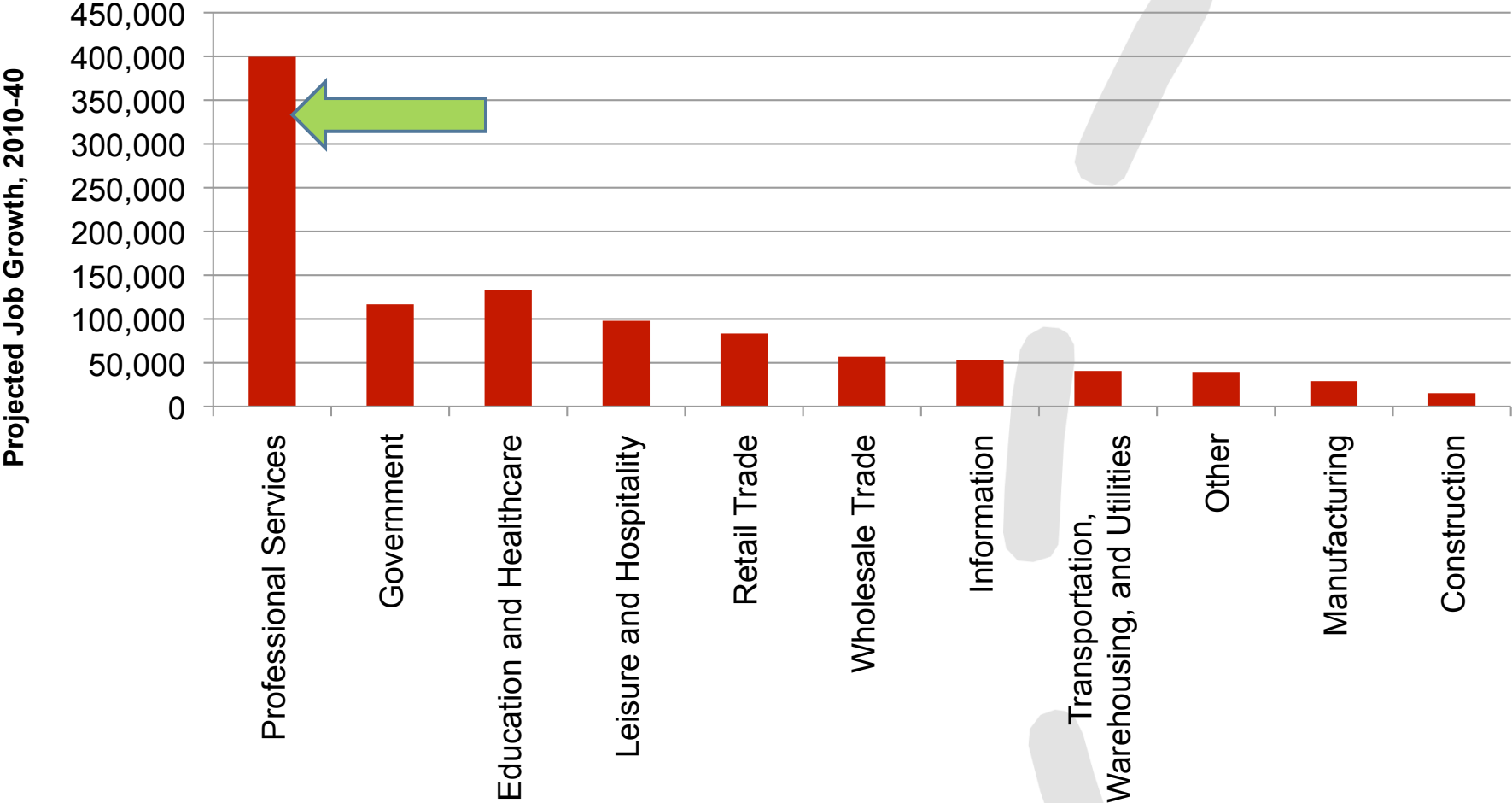
Transit Zone Capture Rate by Sector Group, 2008



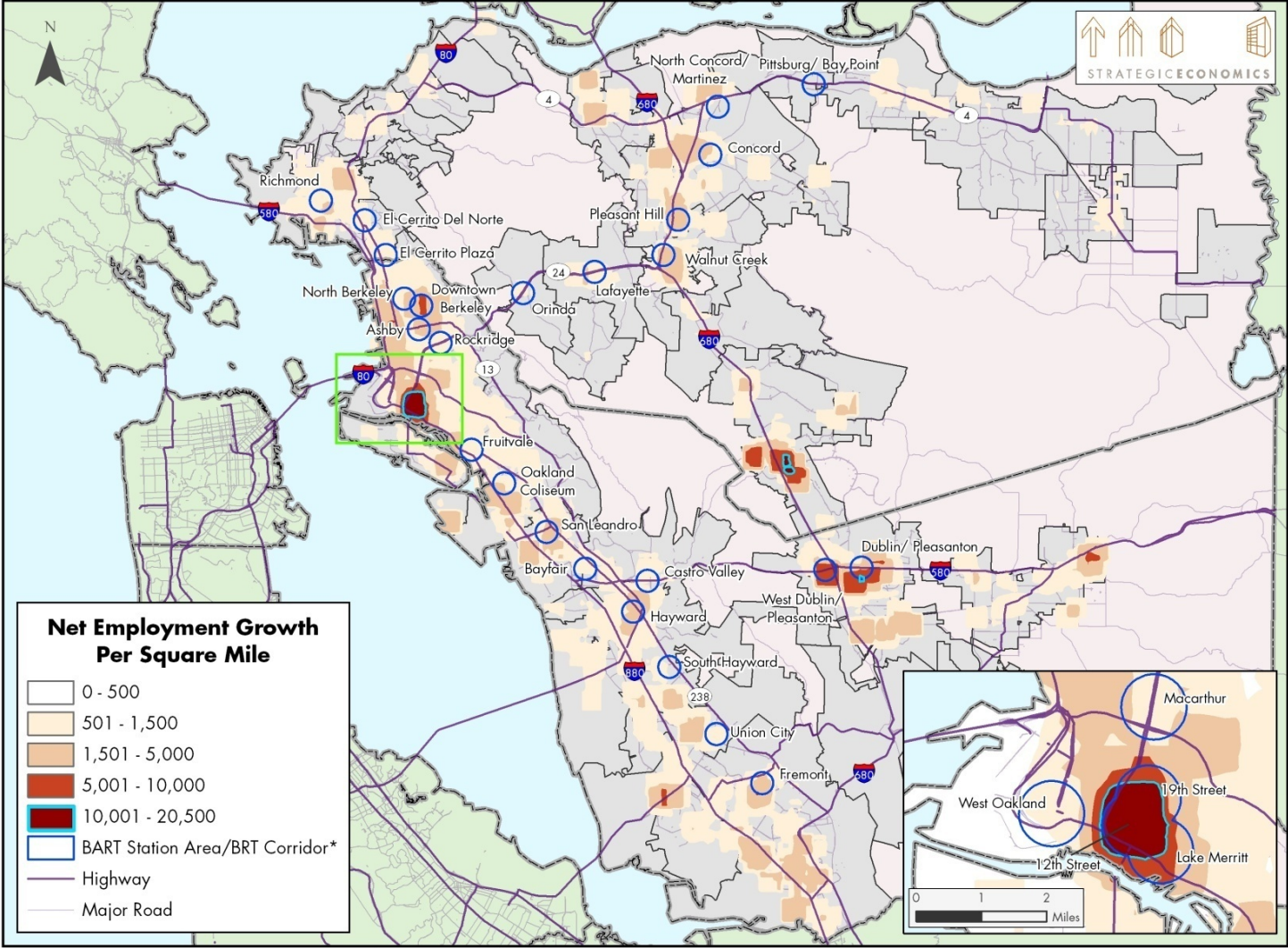
Benefits of agglomeration stronger for certain industries

- Greater access to appropriate shared workforce
- Geographic proximity to similar and complementary firms
- “Knowledge spillover”
- Urban amenities for firms focused on particular segments of the labor force (Gen X and Millennial)

Projecting future demand for jobs near transit by targeting key sectors



Understanding spatial implications of job growth informs future land use planning



Source: Strategic Economics, 2011; Haveman Economic Consulting, 2011; National Establishment Time Series (NETS), 2009; US Census; ESRI; MTC.